

N₂/NO gas regulator with dial flowmeter

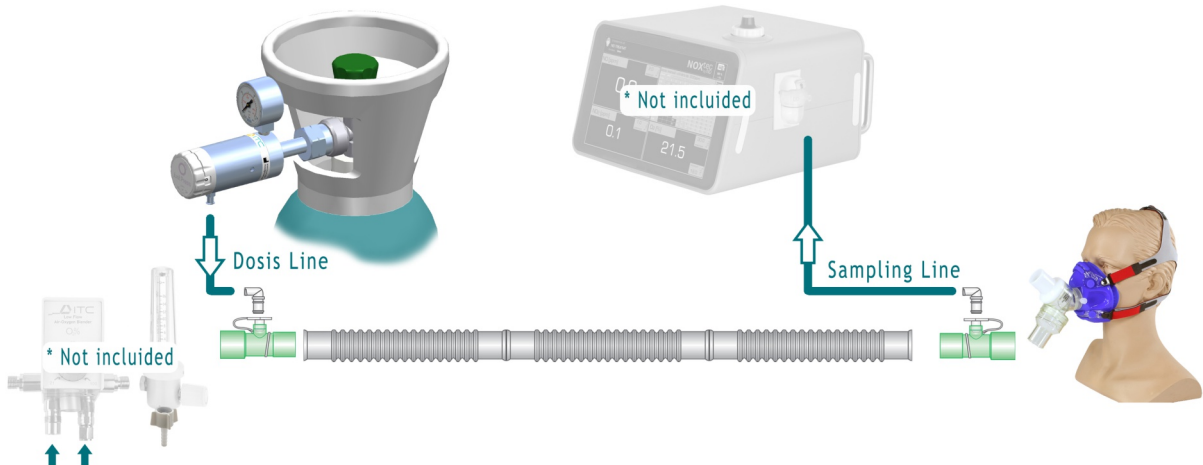


Just Press P gas regulators are specially designed for its use in hospital or ambulances N₂/NO therapy services.

- They must be used in combination of a main flow source and a monitor to measure the final concentration of NO supplied to the patient and the possible generation of NO₂ (*consult our NOXtec line*).
- Turning the control button the operator can select the flow that will be supplied by its inferior connection. This selection appears in the front display. Model available with twelve positions: 0 - 0.07 - 0.10 - 0.15 - 0.20 - 0.25 - 0.30 - 0.40 - 0.50 - 0.60 - 0.85 - 1.10 l/min.
- It incorporates a manometer to read the pressure of the cylinder.
- Includes table of dose.

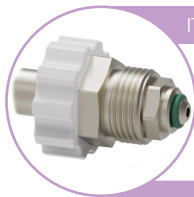
Manual Mode [450 ppm cylinder]												
manual dose												
manual	vent f	expected dose [ppm] vs resp. Flow & manual position										
L/min	1	2	3	4	5	8	10	12	15	20	25	50
0.07	29	15	10	8	6	4	3	3	2	2	1	1
0.10	41	21	15	11	9	6	4	4	3	2	2	1
0.15	59	31	21	16	13	8	7	6	4	3	3	1
0.20	75	41	28	21	17	11	9	7	6	4	4	2
0.25	90	50	35	26	21	14	11	9	7	6	4	2
0.30		59	41	31	25	16	13	11	9	7	5	3
0.40		75	53	41	33	21	17	15	12	9	7	4
0.50		90	64	50	41	26	21	18	15	11	9	4
0.60			75	59	48	31	25	21	17	13	11	5
0.85			99	79	65	43	35	30	24	18	15	8
1.10				97	81	54	45	38	31	23	19	10

Manual Mode [800 ppm cylinder]												
manual dose												
manual	vent f	expected dose [ppm] vs resp. Flow & manual position										
L/min	1	2	3	4	5	8	10	12	15	20	25	50
0.07	52	27	18	14	11	7	6	5	4	3	2	1
0.10	73	38	26	20	16	10	8	7	5	4	3	2
0.15		56	38	29	23	15	12	10	8	6	5	2
0.20		73	50	38	31	20	16	13	11	8	6	3
0.25		89	62	47	38	24	20	16	13	10	8	4
0.30			73	56	45	29	23	20	16	12	9	5
0.40				94	73	59	38	31	26	21	16	13
0.50					89	73	47	38	32	26	20	16
0.60						86	56	45	38	31	23	19
0.85							77	63	53	43	33	26
1.10								79	67	55	42	34

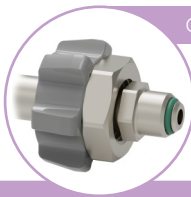


TECHNICAL SPECIFICATIONS

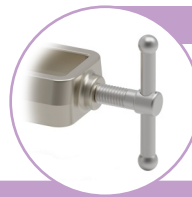
Materials:	Stainless Steel AISI 316L and FKM
Precision:	± 30 %
Maximum supply pressure:	200 bar.
Available flows:	0 - 0.07 - 0.10 - 0.15 - 0.20 - 0.25 - 0.30 - 0.40 - 0.50 - 0.60 - 0.85 - 1.10 l/min Consult our staff about other ranges.
Inlet connections:	ITC EP-6, BS-341, DIN 477, ISO 5145, CGA V-1, NF E29-650, etc...
Outlet connection:	Luer-lock female.
Point of design:	4.5 bar ± 0.5 bar.
Calibration:	101.3 kPa and 23 °C.
Dimensions:	Ø40 x 135 mm
Weight:	690 grs.
Standards:	In compliance with Directive 93/42/EEC In compliance with UNE-EN ISO 10524 In compliance with UNE-EN ISO 15002
Classification:	Class IIb



ITC EP-6



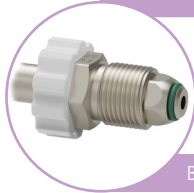
CGA V-1



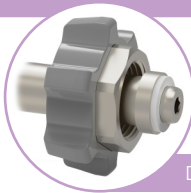
Pin-Index

INLET CONNECTION STANDARDS

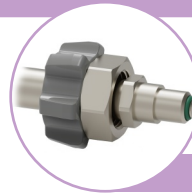
(Consult our staff about other standards)



BS 341-3



DIN 477-1



NF E29-116